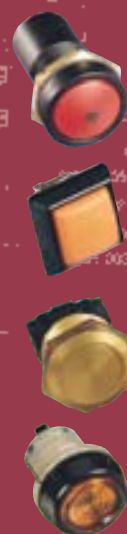


SWITCH SOLUTIONS



How do you choose a switch solution for your OEM application?
ITW makes it simple.

ITW Switches and Switchpanels has developed a wide range of products for industries such as Control and Instrumentation, Defence, Telecommunications and Domestic Appliances.

We produce as standard a comprehensive range of push button, micro, slide and rocker switches as well as customer specific switch panel assemblies. But if we don't have the ideal product in stock, we'll work with you and design one to suit your specific application.

Over 20 years, we've gained a reputation for the highest quality standards, innovative ideas and a rapid response to customer requirements.

We're also approved to ISO 9001 and can test to all British and European specifications.

Switch solution? It has to be ITW.

- SNAP ACTION
- CUSTOM ASSEMBLIES
- PUSH BUTTON
- SLIDE
- ROCKER INDICATOR
- SEALED

ITW Switches
ITW Switchpanels

ITW Switches
A Division of ITW Limited
Norway Road
Portsmouth
England
PO3 5HT
Tel: 00 44 (0) 2392 656200
Fax: 00 44 (0) 2392 666352
E-mail: info@itwswitches.co.uk
Website: www.itwswitches.co.uk

PANEL
SEALED
PUSH
BUTTON



MICRO

SWITCH
PANELS

VANDAL
RESISTANT

DATA
ENTRY
PUSH
BUTTON

ITW Switches
ITW Switchpanels

INTRODUCTION

ITW Switches

We are a division of a large multinational company providing a broad range of switch and switchpanel solutions for the OEM market. Our products are used extensively in a wide cross section of industries including: Automotive, Military, Telecommunications and Domestic Appliances which have earned us a reputation for innovative ideas and rapid response.

Working with You

We are geared for customer support and strive to develop a close working relationship with our customers. If we cannot meet your requirements with a standard product, we will be pleased to develop, with you, a customised design. We offer a full technical back up service and our network of distributors and agents means we're only a phone call away.

Quality Assurance

ITW Switches is approved to ISO 9001 and capable of testing to all major British and European specifications. We regularly review our rigorous in-house test procedures to ensure that the highest standards of quality and reliability are maintained.

Using This Shortform

This shortform catalogue provides a brief overview of some of our more popular standard switch products. It by no means covers the complete range and therefore, if you cannot locate a switch or switchpanel suited to your application, please contact your nearest ITW Switches distributor who will be happy to supply you with full product information and technical specification.

APPLIANCE



SERIES 91 GAS IGNITION

Rotary and snap action switches designed specifically for the gas ignition industry. BEAB approved. Range is ideal for gas taps, oven thermostats and the illumination of certain appliances on gas cookers. 250mA max.

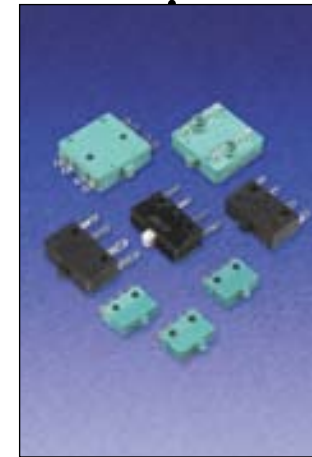
SLIDE



SERIES SE & SY VOLTAGE SELECTORS

Rugged, internationally approved voltage selector, 1 or 2 pole versions with a choice of actuators, mounting styles and terminals. For power supplies, banking machines and portable equipment. 10A max.

MICRO



SERIES 16, 18 & 26

High integrity microswitch. 1 and 2 pole versions, gold or silver contacts. International approvals according to version. Military and telecommunication applications. 10A max. Series 18 is ITW's smallest microswitch, MIL-S-8805/76 qualified for demanding applications such as military and avionics. Logic switching to 8A gold contacts.

MICRO



SERIES 19N

Snap action microswitch. Choice of terminals, operating forces, an IP67 rated sealed product is available. For high volume applications such as automotive, security and telecommunications. 5A max. BEAB and ENEC approved versions.

SWITCH ASSEMBLIES



Using proven switch technologies, ITW can create complete custom designed switch assemblies. The ITW design team works closely with our customer's engineering staff to produce a unique, tailored and cost-effective solution.

SWITCH PANELS



As well as producing a variety of discrete membrane switchpanels, ITW offers a project selling capability in order to design and manufacture solutions that can include discrete switches, on-board electronics, displays and other features as required.

PANEL SEALED PUSH BUTTON



SERIES 49-59

Momentary panel sealed cut-out pushbutton switches. The fully sealed logic level version is terminated by flying leads and is available with or without status illumination. The range also includes a panel sealed 10A version.

PANEL SEALED PUSH BUTTON



SERIES 59

Momentary action panel sealed, miniature, rugged pushbutton. Available with status illumination. Ideal for harsh environmental applications such as military communication keypads. 400mA max.

PANEL SEALED PUSH BUTTON



SERIES 76-91

Robust IP67 panel sealed pushbutton for reliable switching. Flame retardant body, iceproof. Excellent for mining, dairy and security applications. Non-illuminated. 10A max.

PANEL SEALED PUSH BUTTON



SERIES 76-94

An impact resistant range of pushbutton, rotary and indicator units, panel sealed to IP67. All external parts are made from non-sparking material. 10A max.

VANDAL RESISTANT



SERIES 57

A range of miniature, momentary action, rugged panel sealed push-button switches. Sealed to IP67 and designed to be impact resistant. Available with or without status illumination.

VANDAL RESISTANT



SERIES 76-95

A series of panel sealed IP67 vandal resistant switches available in a variety of base materials and colours. All switches provide momentary action and are based on the Series 16 snap action microswitch. Front and rear mounting versions are available.

DATA ENTRY PUSH BUTTON



SERIES 39

Versatile PCB mount pushbutton for high integrity logic level switching. Base sealed, right angle and standard versions for audio/video equipment and automotive. 250mA max.

DATA ENTRY PUSH BUTTON



SERIES 60

Miniature dataswitch. Short travel tactile momentary action and sealed PCB terminals. Designed for keypads, instrumentation and telecommunications. 25mA max.